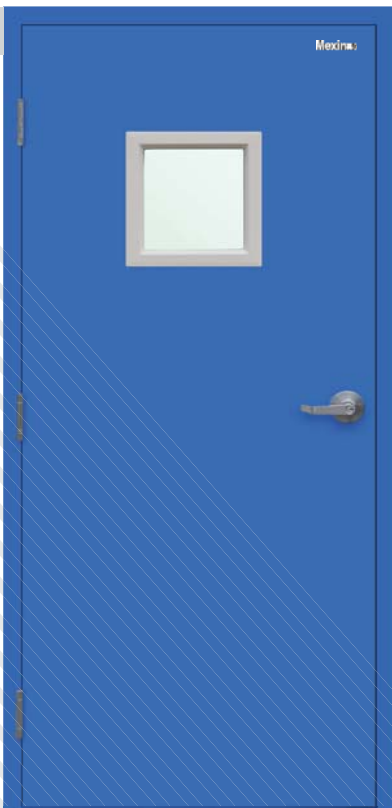


# ■ HOLLOW METAL DOOR

## 商用防火门



BT1N2050GW



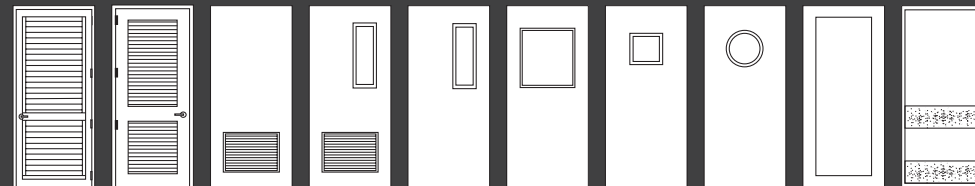
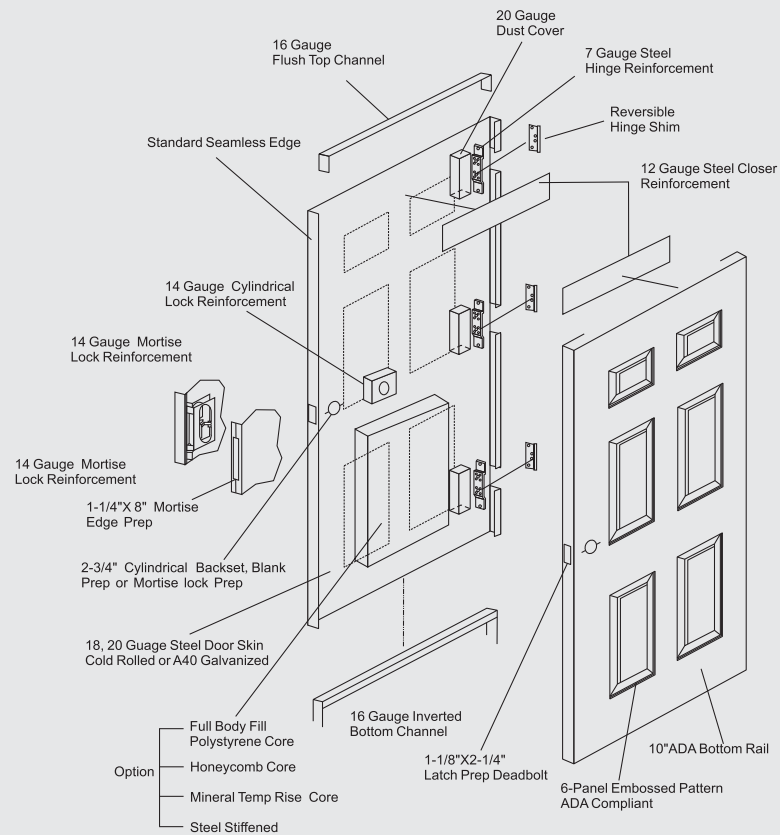
As the oldest manufacturer of hollow metal doors and frames in China, Mexin has been supplying hollow metal materials over a decade with consistent quality and competitive cost. All of our HM products conform or exceed SDI/HMMA industry standards, and are fire tested and certified with Intertek/Warnock Hersey Inc from 20Min up to 3Hr fire rating, complying these criterias as UBC 7-2-97, UL 10 b/c, NFPA 252. Mexin HM products are widely used in commercial, institutional and industrial applications worldwide. Custom products are available. Consult factory for more information.

作为中国最早生产商用门及商用门框的厂家，美心从始至终一直致力于为全球客户提供高品质及有竞争力的产品。我司所有商用产品均按照SDI/HMMA行业标准生产，并通过（Intertek）和WH防火认证，标准为UBC 7-2-97, UL 10 b/c, NFPA 252, 防火时间涵盖二十分钟至三个小时，产品广泛用于全球各类商业机构、公共设施及工业设施。如需特殊定制门请联系我们。

# ● HOLLOW METAL DOOR

## Structural specification

### 结构图



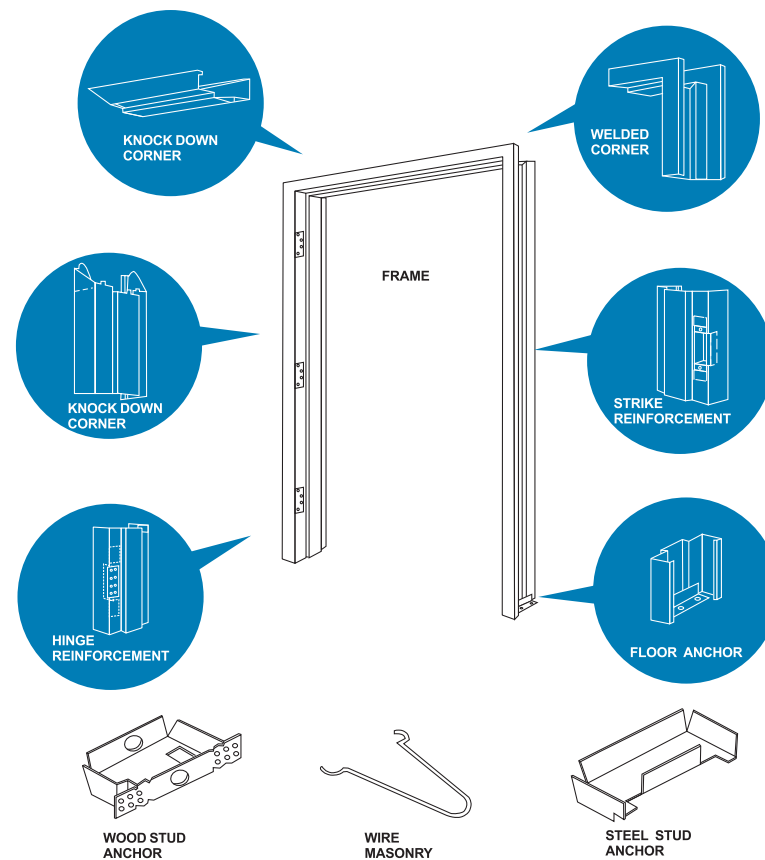
BT2N2000GW



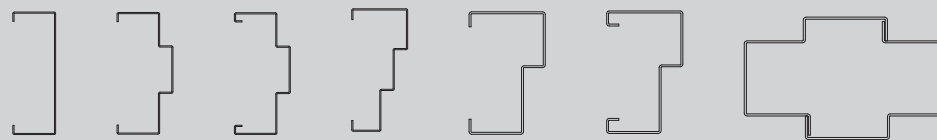
• Hollow metal frame  
商用防火门框



• HOLLOW METAL FRAME  
Structural specification  
结构图

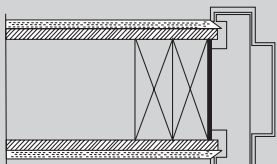
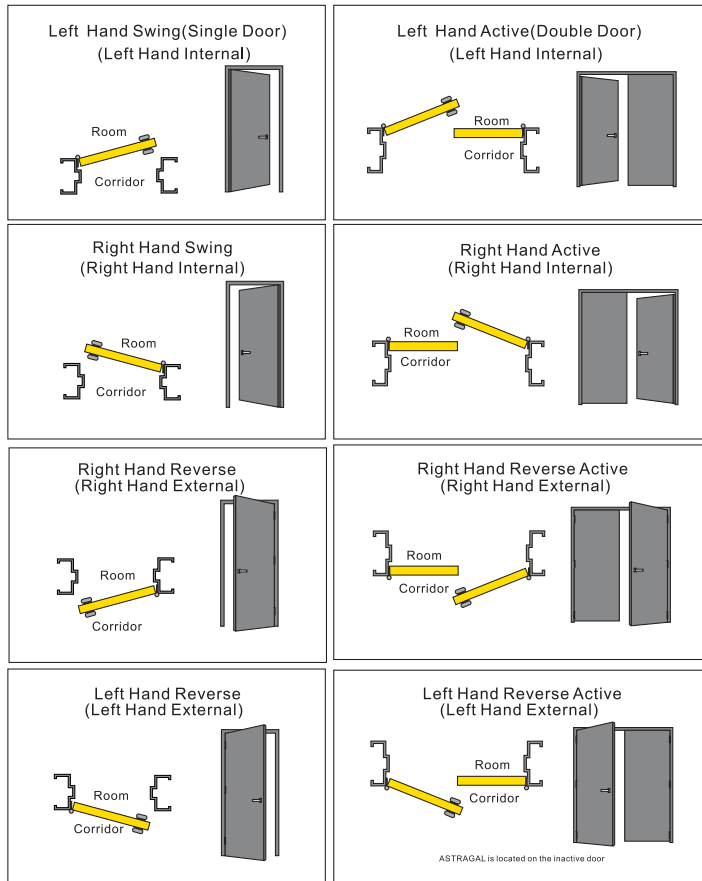


• Frame profiles  
断面图

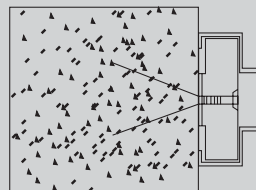


• HOLLOW METAL DOOR & FRAME  
**Handing chart**

门扇门框开启方向示意图



WOOD STUD ANCHOR



PUNCH & DIMPLE

